

### Domestic Bronze Globe Valves

**Features:**

- Class 150
- pressure rating: **300 PSI** cold working pressure, **150 PSI** steam working pressure
- union bonnet
- ASME B1.20.1
- Grafoil® packing
- PTFE disc
- malleable iron handwheel
- 100% factory tested



Female NPT	Bronze Part #
1/2"	<b>DGLBV50</b>
3/4"	<b>DGLBV75</b>
1"	<b>DGLBV100</b>
1 1/4"	<b>DGLBV125</b>
1 1/2"	<b>DGLBV150</b>
2"	<b>DGLBV200</b>

### Forged Steel Globe Valves

**Features:**

- Class 800
- ASTM A105, ANSI B120.1
- bolted bonnet
- pressure rating: **1975 PSI**
- maximum temperature: **800°F (427°C)**
- can be used for steam service



Female NPT	Forged Steel Part #
1/2"	<b>FSGLBV50</b>
3/4"	<b>FSGLBV75</b>
1"	<b>FSGLBV100</b>
1 1/4"	<b>FSGLBV125</b>
1 1/2"	<b>FSGLBV150</b>
2"	<b>FSGLBV200</b>

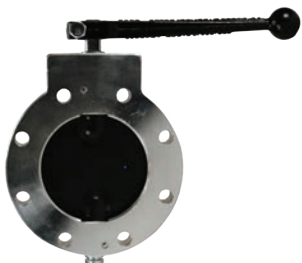
### Betts Wet-R-Dri™ Butterfly Valves

**Application:**

- designed for handling liquid, gaseous or dry products

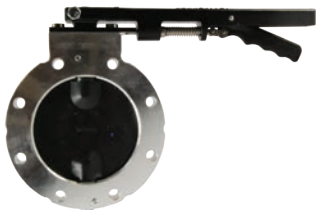
**Features:**

- has a positive stop in the open and closed position
- detent spring and ball assist in holding the disc in the open and closed position
- drilling fits TTMA recommended standards
- opens by turning hand 1/4 turn counter clockwise
- temperature range: **0°F to 400°F (-17°C to 204°C)**



**Manual**

Size	Maximum Working Pressure PSI	Extruded aluminum body with FKM-B disc Part #
3"	<b>75</b>	<b>WD301ALVB</b>
4"	<b>75</b>	<b>WD401ALVB</b>



**Metering**

Size	Maximum Working Pressure PSI	Extruded aluminum body with FKM-B disc Part #
3"	<b>75</b>	<b>WD304ALVB</b>
4"	<b>75</b>	<b>WD404ALVB</b>

- For flange dimensions, diagrams and additional information please reference [canada.dixonvalve.com](http://canada.dixonvalve.com).